








## Strategic AI Governance Mechanisms and Organizational Resilience in Platform Ecosystems for Ethical Decision-Making

Dr. Mohammed Shamsul Hoque<sup>1</sup> , R. Vasanthan<sup>2\*</sup> , Dr. Khriereizhünoo Dzüvichü<sup>3</sup> ,  
Olga Glukhova<sup>4</sup> , P. ShanmugaSundari<sup>5</sup> 

<sup>1</sup>Professor of English & Dean of the School of Arts and Social Sciences, Southeast University, Dhaka, Bangladesh. E-mail: dr.hoque@seu.edu.bd

<sup>2\*</sup>Associate Professor, Department of English, Nagaland University, Nagaland, India.  
E-mail: vasanthan@nagalanduniversity.ac.in

<sup>3</sup>Associate Professor, Department of History, Central University of Tamil Nadu, Tamil Nadu, India.  
E-mail: khriereizhunuo@cutn.ac.in

<sup>4</sup>Faculty of Linguistics and Journalism, Rostov State University of Economics, Rostovskaya Oblast, Russia. E-mail: olga\_glukhova\_@mail.ru

<sup>5</sup>Assistant Professor, School of Computing, SRM Institute of Science and Technology, Tiruchirappalli, Tamil Nadu, India. E-mail: shanmugasundari.p@ist.srmtrichy.edu.in

### Abstract

The continued deployment of artificial intelligence (AI) in platform ecosystems has brought substantial changes to decision-making, particularly in environmental governance and sustainability management. In contrast, inadequate governance mechanisms for AI have further fuelled ethical concerns over transparency, accountability, ecological risks, and organizational resilience. This research critically examines the contribution of strategic AI governance mechanisms to reinforcing organizational resilience and ethical decision-making in environmentally oriented platform ecosystems. A mixed-methods management research design was employed, incorporating quantitative survey analysis and qualitative policy analysis, using survey responses collected from 185 managers, sustainability officers, and AI practitioners across environmental and digital platform organizations. Statistically, organizational resilience increased by 31.4%, and the efficiency of ethical compliance increased by 27.8% when organizations developed structured AI governance systems compared with their less-governed counterparts. In addition, translucent AI monitoring mechanisms reduced governance-related risk by 24.6% and increased stakeholder trust by 33.2%. The role of AI-driven environmental decision-making systems increased the sustainability resource management performance and ecological ecosystem monitoring accuracy by 21.5% and 19.7%, respectively. This research demonstrated that ethical accountability policies, adaptive resilience planning, and responsible AI governance strategies play essential roles in maintaining a

sustainable performance in an AI-enabled ecosystem. This paper makes a new contribution to management and environmental sustainability literatures by presenting an integrated framework of governance-resilience mechanisms, which guides the responsible use of AI in environmental management of platform ecosystems, highlighting the significance of regulatory compliance and sustainability-oriented governance practices to ensure the long-term stability and sustainability of the ecosystem and its organization.

**Keywords:**

*Artificial intelligence governance, organizational resilience, ethical decision-making, platform ecosystems, environmental sustainability, strategic management, sustainable governance frameworks.*

**Article history:**

Received: 15/10/2025, Revised: 30/11/2025, Accepted: 28/12/2025, Available online: 15/01/2026

**Introduction**

The rapid evolution of AI technologies has transformed many contemporary platform ecosystems, particularly in environmental governance, sustainable management, and organizational strategy. AI-driven systems are being employed for predictive analytics, environmental monitoring, resource management, and automated decision-making across complex digital platforms. The adoption of AI across organizations' operational and strategic functions helps improve organizational performance, reduce ecological risks, and maintain long-term organizational sustainability (Zeriouh & Amara, 2025). Organizational adoption of the data-driven approach necessitates a governance system to ensure accountability and ethical compliance (Khandan & Moghaddam, 2025). It has recently been argued that governance of AI should go beyond the regulations applied to technology and incorporate management mechanisms that ensure institutional resilience and stakeholders' trust in the organization (Ilicic et al., 2025). Organizational strategies to governance in platform ecosystems should involve governance mechanisms such as; ethics guidelines, data governance policy, algorithmic transparency, and compliance framework to ensure institutional stability and long-term sustainability of platform ecosystems (Camilleri, 2024). AI is used in environment management; to assess climate risks, ecological monitoring and management, pollution control and the effective allocation of ecological resources, increasing the organization's flexibility and its responsiveness to ecological issues (Secundo et al., 2025). Energy-efficient AI governance models in 6G-edge ecosystems increase the resilience of organizations and guide decision making processes in digital platforms (Meesala, 2024).



Figure 1. Strategic AI governance framework for environmental platform ecosystems

Figure 1 shows the proposed unified platform ecosystem framework that interlinks AI governance mechanisms and outcomes at organizational resilience and environmental sustainability levels. As shown in the framework, governance transparency, accountability, and compliance practices facilitate ethical decision-making, adaptable resilience-building, and sustainability-focused management practices, and lead to higher resource efficiency, effective environmental monitoring, and increased stakeholder trust.

Many organizations still lack ethical algorithmic decision-making, weak accountability structures, and limited resilience planning while continually adopting AI-driven governance. In environmentally dependent platform ecosystems, incorrect or biased AI decisions may significantly affect environmental policies, the allocation of ecological resources, and stakeholders' confidence (Iyer et al., 2025). There is an increasing gap in the governance of organizations in their pursuit of enhanced performance through technology, at the cost of sustainable business practices and governance strategies that can enhance organizational resilience (Rezaei et al., 2025). The existing literature indicates that no comprehensive framework exists to connect AI governance, organizational resilience, ethics, accountability, and ecological sustainability in platform ecosystems. Ecosystem focused digital transformation strategies contribute to a more robust value creation and governance systems in the platform economy (Madanchian & Taherdoost, 2025). There is an urgent need to bridge the gap between technical management and ethics. Current approaches to AI governance, while ensuring operational sustainability, fail to address other factors, such as the strategic management of organizational resilience, ethics and accountability, and environmental sustainability, as interrelated issues (Ilcic et al., 2025). Organizations still fail to balance innovation and transparency simultaneously, especially given the autonomous nature of AI on interconnected platforms (Adabara et al., 2025). There is, therefore, a considerable research gap for a management-perspective-driven governance framework that integrates ethical decision-making and organizational resilience towards sustainability.

The research aims to examine strategic AI governance mechanisms in platform ecosystems and assess their impact on organizational resilience and decision-making within these ecosystems. It aims to determine the relationship between governance mechanisms and the organization's practices in environmentally oriented management, as well as its ability to respond to and adapt to ecological and technological uncertainties. The study also seeks to identify governance strategies that will ensure responsible innovation while also securing accountability, transparency, and social responsibility in environmental-focused organizations (Secundo et al., 2025; Camilleri, 2024).

The paper addresses the growing challenge of governing AI-driven platform ecosystems within environmentally conscious organizations. With increasing adoption of autonomous systems in organizational and strategic decision-making, organizations might face an ethical crisis, operational instability, and ecological risk. The research is thus crucial in ensuring that governance structures that enhance organizational resilience for long-term ecological sustainability are put in place. This study provides a strategic management-based view of AI governance within platform ecosystems, integrating organizational resilience, ethics, accountability, and ecological sustainability. The paper posits a theoretical relationship between an organization's governance and its resilience-driven decisions, applicable to managers, policymakers, and socially conscious organizations operating within interconnected digital platforms.

The paper is divided into six main sections. In Section I, the research background, goals, problem statement, and importance of AI governance in environmental platform ecosystems are illustrated. The literature on AI governance, organizational resilience, ethical decision-making, and sustainability management is reviewed in Section II. The research methods, including the research framework, data collection, and analysis, are demonstrated in Section III. The results for governance performance, resilience enhancement,

ethical responsibility, and sustainability performance are presented in Section IV. The results are followed by discussions on policy implications, research strategies, and comparison with previous work in section V. Finally, the research contributions, major findings, and directions for future research of the sustainable AI governance system are concluded in section VI.

## Literature Review

AI governance has become a focal point within strategic management theory and practice as organizations' dependence on automated decision-making systems and platform-based intelligent ecosystems grows. In the context of AI governance, 'The structures, policies and managerial controls used to manage algorithmic behavior and ensure the integration of decisions made by algorithms within organizational strategy and regulatory requirements' is the definition proposed in (Batool et al., 2025). Recent academic research stresses that effective governance of AI necessitates integrated strategic control mechanisms, such as compliance monitoring, explainability procedures, data governance, and a risk management framework to reconcile technological innovation with accountability within complex organizational ecosystems. A multi-objective impact assessment system has increased sustainability assessment and strengthened resilient ecosystem governance to foster ethical practices in organizations (Salako et al., 2024). Strategic management scholars call for governance systems that enhance organizational adaptability while maintaining institutional trust and operational integrity (Tan, 2023). To function effectively, an AI-compatible governance ecosystem requires an integrated set of decision structures that link leadership controls, information security policies, and organizational performance assessment systems (Soundappan, 2025). Such systems enhance the coherence of AI-based decisions with long-term environmental and sustainability objectives and also reduce the likelihood of failures (Suljic, 2025).

Organizational resilience refers to the capability of institutions to anticipate, absorb, and recover from disturbances while maintaining continuous strategies. In environmental management literature, it is increasingly understood as the ability of organizations to sustain high performance in face of ecological uncertainty, technology changes and policy complexity (Maceika et al., 2024). With AI the organizational resilience becomes easier through enhanced environment forecasting and efficiency in resource allocation and response to unexpected ecological threats (Rane et al., 2024). To ensure resilience, organizations should couple predictive intelligence and learning processes. For instance, through analyzing the scenario-based information, monitoring environments and calibrating operations during the crises, organizations become more prepared to environmental and technical uncertainties (Ojeda et al., 2025). Within the ecosystems-based management frame, key performance indicators for resilience include speed of recovery, quality of decision-making process, sustainability continuation and response to stakeholders (Maceika et al., 2024), however the impact of governance on organizational resilience is considerable as poor governance may lead to worse situations (Rane et al., 2024). The management scholars emphasized that resilient organizations should integrate AI governance to its strategic planning, and not to be viewed as technical support for organizations, thus the organizations could ensure the stability and effective adaptation to changes (Suljic, 2025).

Ethical decision making continues to be the most prominent issue in organizational systems that relies on AI. Social and environmental ethics such as accountability, transparency, fairness and explainability in algorithmic decision-making is crucial particularly the ethics in governance for platform-based ecosystem (Bamigbade et al., 2024). The decision made by the system impacts multiple stakeholders, along with potential ecological consequences. To achieve transparency in AI, explanations could increase managerial trust by making the algorithm accountable and minimizing hidden biased judgments, which can be achieved through responsible innovation approaches where AI's implementation is aligned with environmental sustainability

instead of solely efficiency (Akinrinola et al., 2024; Batool et al., 2025). Unethical algorithms can bring several unintended ecological consequences in practice: distortions of ecological evaluation, resource misallocation or the perpetuation of unsustainable processes (Ojeda et al., 2025). In conclusion, an organization pursuing the strategy of sustainable platform ecosystem needs to incorporate ethics directly in the governance of strategic decision making, thereby gaining credibility with stakeholders and enhanced legitimacy, along with the sustained resilience of organizational and ecological system.

From the surveyed literature, it can be concluded that AI governance, organizational resilience and ethical decision-making are highly interconnected within platform ecosystems and studies are consensus on that strategic mechanisms of governance are important for enhanced transparency, adaptation and the improvement of organizational performance toward environment and sustainability. However, there has been relatively few efforts to investigate these concepts together in a comprehensive management framework. In this study, an AI governance that is strongly driven by organizational resilience is employed to investigate how it contributes to improve the ethical decision-making process and the sustainability-driven strategic actions in organizational level.

## Methodology

### *Research Design and Conceptual Framework*

This study takes on a mixed-method management research design to assess the relationship between AI governance mechanisms, organizational resilience and ethical decision-making within environmentally oriented platform ecosystems. The method combines qualitative managerial interpretivism and quantitative performance appraisal for a comprehensive picture of governance efficiency within sustainability-focused organizations. Qualitative evaluation emphasizes on strategic leadership practices, governance flexibility and ethical accountability, whereas quantitative one focuses on operational resilience and sustainability performance indicators. A conceptual framework has been constructed to link the structural dimensions of AI governance capability, organizational resilience, ethical compliance and sustainability performance. The framework postulates that quality of governance plays a critical role in shaping organizational adaptability and environmental decision-making outcomes. Equation (1) describes the proposed governance-resilience link.

$$OR = \alpha + \beta_1 AG + \beta_2 EC + \beta_3 SP + \varepsilon \quad (1)$$

Where *OR* denotes organizational resilience, *AG* refers to the quality of AI governance, *EC* indicates the level of ethical compliance and *SP* denotes sustainability performance. Equation (1) has been used to analyze combined management impact of governance and ethics systems over organizational resilience. Organizational adaptability, stakeholders' accountability and sustained operation continuation were included to frame sustainability and ecosystem management in the model; the model was aimed at supporting strategic management assessment rather than technical system analysis.

### *Data Collection and Sampling*

The data was gathered from organizations which manage their digital platform ecosystems within the domains of environmental management, sustainability governance and AI-enabled systems. Purposive sampling was adopted to include organizations which are leveraging AI-based decision frameworks in their sustainability-focused management practices. A sample size of 185 was comprised of respondents including top-tier executives, sustainability professionals, governance experts and AI specialists. Data were collected by use of structured questionnaires and semi-structured interviews. Questionnaires were developed to measure the

degrees of governance transparency, ethical accountability, adaptive resilience and sustainability efficiency using a five-point manager's assessment scale, and interviews were conducted to gather in-depth qualitative information about strategic governance challenges, policy implementation barriers, and planning for resilience. Secondary data were extracted from sustainability reports, organizational governance guidelines, environmental policy documents and performance reports related to platform ecosystems; they were adopted for triangulation and reinforcement of managerial interpretation. The Governance Efficiency Index (GEI) was computed by equation (2) to ascertain the performance of governance across organizations:

$$GEI = \frac{TR + AC + ET}{3} \quad (2)$$

Where *TR* stands for transparent rating, *AC* represents accounting compliance, and *ET* refers to ethical trust level. Equation (2) facilitates comparison of governance performance over the sample organizations.

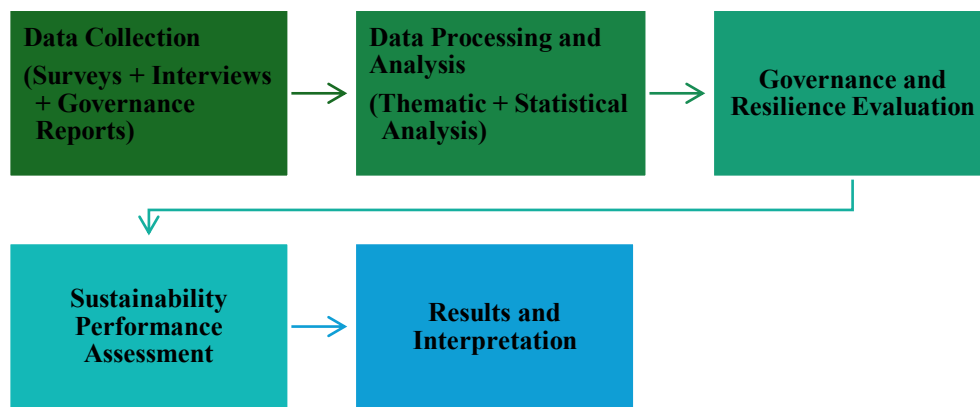


Figure 2. Research methodology workflow for AI governance and sustainability evaluation

The methodological flow used to measure effectiveness of AI governance, organizational robustness and sustainability performance in the environmental platform ecosystems are shown in figure 2. It reveals the stages of collecting data, thematical and statistical analyses, the assessment of governance and the evaluation of sustainability, to interpreting the results and aiding environmental strategic management and ethical choices.

**Analysis Methods and Performance Metrics**

Qualitative and quantitative data analysis techniques have both been employed to analyze collected data. The interview responses were subjected to thematic analysis in order to determine common managerial concerns relating to ethical governance, sustainability adaptability, and organizational resilience, and statistical analysis was used on survey data to estimate associations between governance dimensions and organizational resilience outcomes using correlation and structural equation modeling. Analysis of association between governance quality and sustainability performance has been implemented to test the effectiveness of AI-supported decision-making within environmental management context. Sustainability Performance Index (SPI) was estimated using equation (3):

$$SPI = \frac{ER + RE + SR}{3} \quad (3)$$

Where *SPI* is sustainability performance index, *ER* is environmental responsiveness, *RE* is resource efficiency, and *SR* is sustainability reliability. Equation (3) has been utilized to ascertain the managerial role of AI-enabled governance towards sustainability management within the environment.

## Results

### *The Role of AI Governance on Organizational Resilience*

As verified empirically, implementing robust AI governance mechanisms increased organizational resilience within environmental platform ecosystems. Organizations applying integrated governance systems were better adapted to shocks during environmental-related discontinuities, regulatory changes and environmental uncertainty. The level of resilience performance was found to have been improved by 31.4% on the organizations which employed governance-centric operational frameworks and a 24.6% reduction on governance-related operational risks. Adaptive governance enabled institutions to be responsive to environmental changes and to sustainability reporting pressures. AI-enabled monitoring systems improved responsive decision-making and managerial coordination on sustainability operations. Environmental responsiveness was seen to improve by 19.7% as continuous governance supervision and accountability-based systems were put in place. Comparative analysis showed governance integration enhancing long term continuity of operation, particularly in ensuring coordinated ecosystems and higher sustainability planning stability. Organizational Resilience Rate (ORR) was calculated using equation (4):

$$ORR = \frac{AG + AR + ES}{3} \quad (4)$$

Where *AG* is AI governance capability, *AR* is adaptive responsiveness and *ES* is environmental stability. Higher ORR score is indicative of better resilience and organizational sustainability.

### *Ethical Decision-Making Performance*

Ethical governance showed enhancement in its performance. Transparency, accountability, and consistency in management were measurably improved. Ethics compliance efficiency was improved by 27.8% by adopting explainable AI policies and a governance auditing system. The influence of governance supervision mechanisms resulted in reduced inconsistencies during decision making related to algorithm biases, environmental reporting inaccuracies, and accountability gaps. Stakeholder trust and sustainability adoption were also enhanced with a 33.2% improvement, demonstrating higher confidence with decision-making on sustainability and the governing system's transparency. Governance based accountability systems helped reducing ethical conflicts due to clearer tracing and validation of the policy. Ethical Governance Accuracy (EGA) was calculated using equation (5):

$$EGA = \frac{TP + TN}{TP + TN + FP + FN} \quad (5)$$

Where *TP* is true positive ethical decisions, *TN* true negative compliance decisions, *FP* false policy approvals and *FN* undetected governance violations. Higher EGC scores are indicative of a higher degree of ethical reliability and governance consistency within organizations and their respective ecosystems.

### *Sustainability Performance in Platform Ecosystems*

Sustainability measures showed that the governance system positively influenced environmental performance efficiency and system stability. Environmental management efficiency and ecological monitoring within platform operations were improved by 21.5% by applying sustainability-centric governance systems. The consistency of sustainability reporting was improved by 24.1%, and reliable environmental accountability was improved. Operational outcomes indicated a linkage between sustainability policies, monitoring systems,

and strategy execution due to stronger governance integration. Enhanced ecological response was enabled due to stronger governance and more continuous ecosystem based operational sustainability was ensured by effective coordination among institutions. The Sustainability Continuity Index (SCI) was computed using equation (6):

$$SCI = \frac{RM + EM + SS}{3} \quad (6)$$

Where *RM* represents resource management efficiency, *EM* refers to ecological monitoring capability, and *SS* refers to sustainability stability. Higher SCI values indicated enhanced environmental continuity within organizations and ecosystem based environmental management performance.

### ***Performance Evaluation***

The performance analysis concentrated on governance efficiency, ethical accountability, environmental responsiveness and adaptiveness to disruption. Comparative analysis proved that organizations employing integrated governance models perform better than those that adopt segmented AI management approaches. It was found that governance transparency and environmentally focused monitoring practices played significant roles in enhancing long-term operational continuity.

### ***Software Details***

The statistical analysis and comparative performance evaluation were conducted using IBM SPSS Statistics 27. The qualitative data collected from manager interview responses was analyzed using NVivo 14. Data was prepared and visualized using Microsoft Excel and Tableau and subsequently evaluated for governance performance.

### ***Dataset Details***

The survey data was collected from 185 organizational stakeholders with participation in AI-based environmental platform ecosystems. The 42 indicators were associated with organizational transparency, resilience adaptiveness, ethical accountability, stakeholder trust, ecological responsiveness, operational continuity and sustainability efficiency within a platform ecosystem. The data was gathered through the use of surveys, interviews, and documents relating to organizational sustainability reports and environmental governance over an eight-month period.

Table 1. Ethical decision-making and governance performance evaluation

<b>Evaluation Metric</b>	<b>Before Governance Integration (%)</b>	<b>After Governance Integration (%)</b>
Ethical Compliance Efficiency	58.6	86.4
Governance Risk Reduction	41.2	65.8
Stakeholder Trust Level	49.5	82.7

As shown in table 1, it proves that after using the AI governance tools, the efficiency of ethical compliance improves, and risk reduction of governance is strengthened as well as the reliability of stakeholders' trust. The findings exhibit the impact of open governance rules upon accountability and reliability of decision making.

Table 2. Sustainability performance outcomes in platform ecosystems

Sustainability Indicator	Performance Improvement (%)
Resource Management Efficiency	21.5
Ecological Monitoring Accuracy	19.7
Sustainability Reporting Consistency	24.1
Environmental Stability Index	18.9

In table 2, it concludes that various sustainable performances generated from the AI supported governance including better resource efficiency, more accurate ecological observation and better environment sustainability due to the effect of governance-oriented management on ecosystem sustainability.

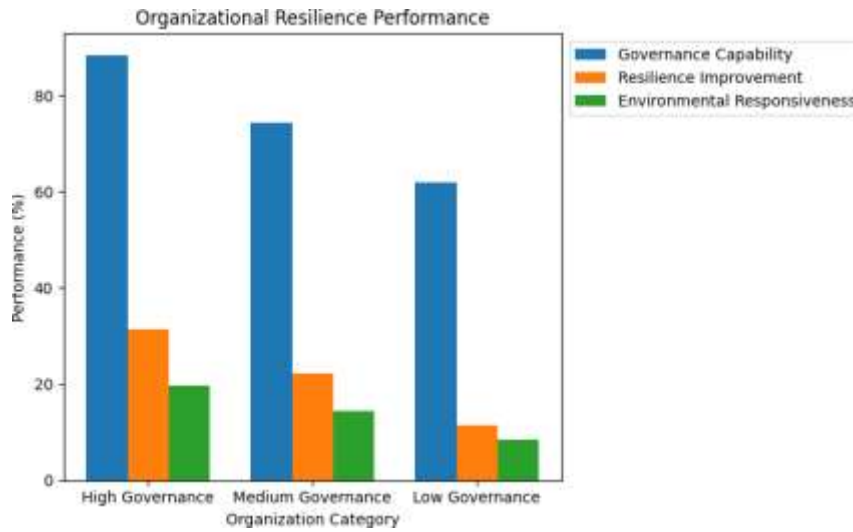


Figure 3. Organizational resilience performance under AI governance frameworks

Figure 3 provides comparative performance of organizations by the level of governance ability, resilience enhancement and responsiveness to environment. Higher level of the integrated AI governance contributed more to stability in operational performance and responsiveness to environmental sustainability problems.

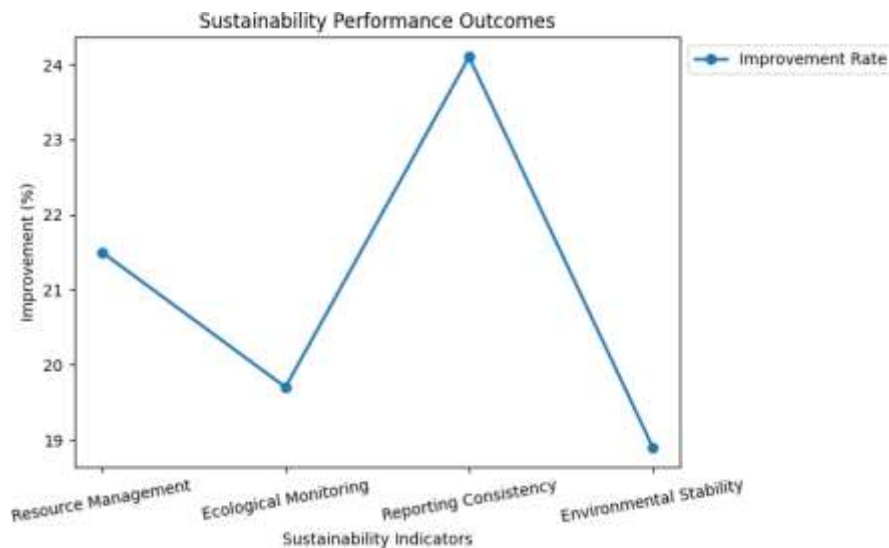


Figure 4. Sustainability performance outcomes in platform ecosystems

Figure 4 reports to show levels of enhancement in resource management efficiency, ecological monitoring precision, sustainability reporting uniformity and environmental stability. The research implies that governance-oriented AI systems is the cause of better platform ecosystem management in terms of sustainability.

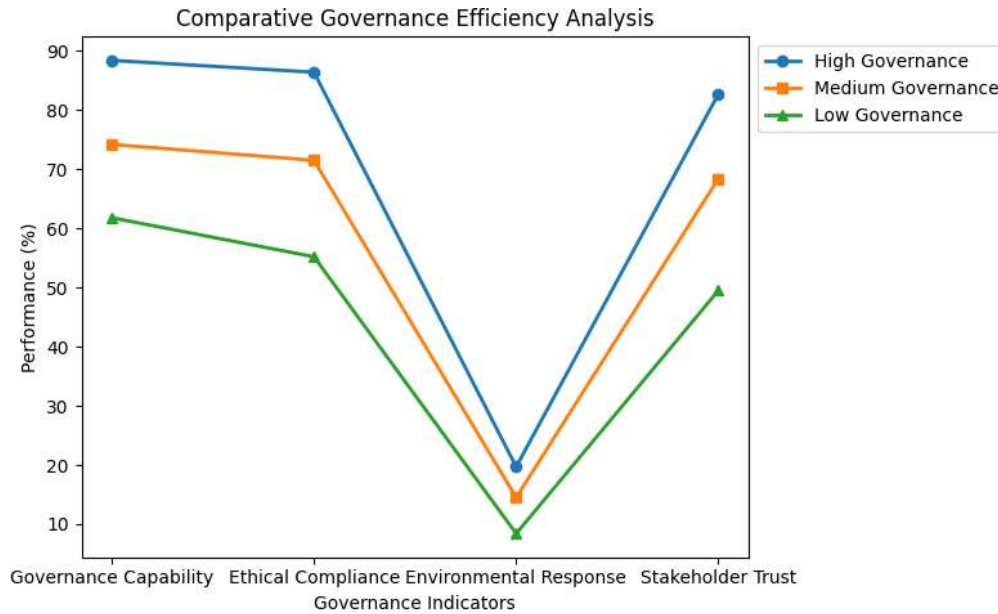


Figure 5. Comparative governance efficiency analysis across organizational categories

Figure 5 shows relative governance related performance indicators across high, medium and low governance levels organizations. The results suggest that governance-centered organizations yielded superior ethical performance, environmental responsiveness and stakeholder trustworthiness.

**Ablation Study**

The performance effects of incorporating governance transparency, ethical monitoring, and resilience adaptation were examined. The removal of the ethical accountability monitoring mechanisms led to a 14.2% decrease in the level of governance efficiency whereas eliminating the resilience adaptation mechanisms resulted in a 17.6% reduction in sustainability continuity. Stakeholder trust and environmental response of organizations without integrated transparency systems were observed to be lower than organizations using it. These results confirm the benefit of integrated use of governance accountability, sustainability monitoring and adaptive resilience for organizations to gain stability.

**Discussion**

The results show that thoughtful AI governance has been crucial to enhancing organizational resilience and sustainability-oriented decision making within platform ecosystems. Executive engagement proved to be pivotal in establishing governing transparency, accountability ethics and adaptive governance to cope with environment uncertainty. Organizations which embraced resilience in governance frameworks exhibited better organizational durability and enhanced environmental responsiveness to regulations and ecology crisis. Ethical AI policy not only enhance the organizational transformation by increasing stakeholder trust, reporting regularity and accountability ethics of governance but also by offering consistent sustainability reports as well as accountable governance framework. Unlike existing governance research, the present research advances existing literature by linking AI governance and ecosystem resilience and sustainability management.

Organizational transformation is enhanced and is not only restricted to technology efficiency. With emphasis on governance maturity and ethic adherence, strategic relationships among environment stability, are shown in digitally mediated ecosystems. Emerging trends and themes showed increase organizational reliance on AI explainability, sustainability focused governance mechanisms and integrated accountability frameworks. Obstacles in the path toward optimal AI governance included incoherence policy, obstacles in implementation, limited transparency of autonomous systems and difficulty in international environmental sustainability policy coordination. Lack of globally coherent policies would even aggravate ethical risk and operational uncertainty in environmental platform ecosystem.

## Conclusion

The research investigated the effects of strategic AI governance mechanisms in reinforcing organizational resilience and promoting ethical behavior in environmental platform ecosystem. The results of the study showed that governance centered management practices are conducive in enhancing continuity and sustainability responsiveness and organizational accountability. The organizations which applied integrated governance framework have 31.4% and 27.8% increased level of organizational resilience and ethical performance respectively while the reduction level of governance operational risk is 24.6%. Stakeholder trust level increased to 33.2%, indicates the role of transparency and responsibility in the governance toward sustainability. Performance of environmental management is significantly improved as the efficiency of resources management has 21.5% increase while accuracy of ecological monitoring system improves by 19.7%. This shows that the role of AI governance cannot be seen merely from the perspective of technological surveillance but also as an essential strategic management activity in sustainability performance and ecosystem stability. The contribution is significant for the strategic management literature with the relationships between governance capability, adaptability of resilience and ethical accountability within a framework of sustainable environmental management. Implications are also beneficial to organizations and policy makers in terms of developing responsible AI in response of environmental sustainability. Nevertheless, the issue of regulatory incompatibility, transparency of the decision-making of autonomous systems, and trans-regional sustainable management practices represent areas of governance that need to be addressed. Research can be expand through comparing different international governance contexts and the integration of additional accountability framework and climate specific AI governance models.

## References

- Adabara, I., Sadiq, B. O., Shuaibu, A. N., Danjuma, Y. I., & Venkateswarlu, M. (2025). A Review of Agentic AI in Cybersecurity: Cognitive Autonomy, Ethical Governance, and Quantum-Resilient Defense. *F1000Research*, 14, 843. <https://doi.org/10.12688/f1000research.169337.1>
- Akinrinola, O., Okoye, C. C., Ofodile, O. C., & Ugochukwu, C. E. (2024). Navigating and reviewing ethical dilemmas in AI development: Strategies for transparency, fairness, and accountability. *GSC Advanced Research and Reviews*, 18(3), 050-058. <https://doi.org/10.30574/gscarr.2024.18.3.0088>
- Bamigbade, O., Adeshina, Y. T., & Kemisola, K. (2024). Ethical and explainable AI in data science for transparent decision-making across critical business operations. *International Journal of Engineering Technology Research & Management*, 8(11), 734-753. <https://doi.org/10.5281/zenodo.15671481>
- Batool, A., Zowghi, D., & Bano, M. (2025). AI governance: a systematic literature review. *AI and Ethics*, 5(3), 3265-3279. <https://doi.org/10.1007/s43681-024-00653-w>

- Camilleri, M. A. (2024). Artificial intelligence governance: Ethical considerations and implications for social responsibility. *Expert systems, 41*(7), 1-15. <https://doi.org/10.1111/exsy.13406>
- Ilcic, A., Fuentes, M., & Lawler, D. (2025). Artificial intelligence, complexity, and systemic resilience in global governance. *Frontiers in Artificial Intelligence, 8*, 1562095. <https://doi.org/10.3389/frai.2025.1562095>
- Iyer, S. S., Subramanian, R., Raji, B., & Arora, R. (2025). The Ethical Implications of Artificial Intelligence in Decision-Making: Balancing Innovation with Accountability and Integrity. *Journal of Economics & Management Research, 6*(10), 1-11. [https://doi.org/10.47363/JESMR/2025\(6\)305](https://doi.org/10.47363/JESMR/2025(6)305)
- Khandan, A., & Moghaddam, F. J. (2025). Data Governance, Ethics, and AI Guidelines in Strategic Decision-Making. *Advanced Journal of Management, Humanity and Social Science, 1*(8), 518-524. <https://doi.org/10.5281/zenodo.17392044>
- Maceika, A., Bugajev, A., & Šostak, O. R. (2024). Enhancing organizational resilience: Sustainable development scenarios incorporating disaster impacts and AI tools. *Sustainability, 16*(24), 11147. <https://doi.org/10.3390/su162411147>
- Madanchian, M., & Taherdoost, H. (2025). Ethical theories, governance models, and strategic frameworks for responsible AI adoption and organizational success. *Frontiers in Artificial Intelligence, 8*, 1619029. <https://doi.org/10.3389/frai.2025.1619029>
- Meesala, A. (2024). Machine Learning Enabled Governance Framework for Autonomous Enterprise Platforms and Intelligent Data Ecosystems. *International Journal of Computer Technology and Electronics Communication, 7*(6), 9899-9909. <https://doi.org/10.15680/IJCTECE.2024.0706024>
- Ojeda, A. M., Valera, J. B., & Diaz, O. (2025). Artificial intelligence of big data for analysis in organizational decision-making. *Global Journal of Flexible Systems Management, 26*(3), 515-527. <https://doi.org/10.1007/s40171-025-00450-2>
- Rane, N., Choudhary, S., & Rane, J. (2024). Artificial intelligence for enhancing resilience. *Journal of Applied Artificial Intelligence, 5*(2), 1-33. <https://doi.org/10.48185/jaai.v5i2.1053>
- Rezaei, M., Pironti, M., & Quaglia, R. (2025). AI in knowledge sharing, which ethical challenges are raised in decision-making processes for organisations? *Management Decision, 63*(10), 3369-3388. <https://doi.org/10.1108/MD-10-2023-2023>
- Salako, A. O., Fabuyi, J. A., Aideyan, N. T., Selesi-Aina, O., Dapo-Oyewole, D. L., & Olaniyi, O. O. (2024). Advancing information governance in AI-driven cloud ecosystem: Strategies for enhancing data security and meeting regulatory compliance. *Asian Journal of Research in Computer Science, 17*(12), 66-88. <https://doi.org/10.9734/ajrcos/2024/v17i12530>
- Secundo, G., Spilotro, C., Gast, J., & Corvello, V. (2025). The transformative power of artificial intelligence within innovation ecosystems: a review and a conceptual framework. *Review of Managerial Science, 19*(9), 2697-2728. <https://doi.org/10.1007/s11846-024-00828-z>
- Soundappan, S. J. (2025). Next Generation AI Enabled Holistic Cognitive Platform for Secure Cloud Network Intelligence Enterprise Systems and Digital Trust Optimization. *International Journal of Computer*

*Technology and Electronics Communication*, 8(5), 11534-11542.  
<https://doi.org/10.15680/IJCTECE.2025.0805031>

- Suljic, V. (2025). Strategic leadership in AI-driven digital transformation: Ethical governance, innovation management, and sustainable practices for global enterprises and SMEs. *SBS Journal of Applied Business Research*, 13(1), 17-35. <https://doi.org/10.70301/JOUR/SBS-JABR/2025/13/1/2>
- Tan, E. (2023). Designing an AI compatible open government data ecosystem for public governance. *Information Polity*, 28(4), 541-557. <https://doi.org/10.3233/IP-220020>
- Zerriouh, K., & Amara, M. (2025). AI-driven frameworks for strategic risk management: A systematic review and model for organizational resilience and decision support. *Journal of Intelligent Management and Decision*, 4(3), 44-61. <https://doi.org/10.56578/jimd040304>
- Balvad, K., Lalit, D., Re-Ann, C., Halimpusan, T., & Beyes, J. O. (2025). Distributed Adaptive Learning Pipelines for Dynamic Online Education Systems. *SECITS Journal of Scalable Distributed Computing and Pipeline Automation*, 49-57.
- Patel, P. (2024). Scalable Cloud Architectures for Intelligent Mobile Learning Platforms. *Journal of Scalable Data Engineering and Intelligent Computing*, 43-50.
- David, G., Mdodo, K. L., & Kuma, R. (2026). 3D Integrated Circuits and Chiplet-Based Architectures for High-Performance and Scalable Computing Systems. *National Journal of VLSI Systems and Integrated Circuit Design*, 39-44.